

Welcome To

OUR E-NEWS



keeping you in the loop

We had a good response from our last E-news, it was great to see it was read and the tips we included well received. We have included in this issue the correct installation method again, just encase anyone needs a refresher.

After weeks of rain and less than ideal weather, it looks like the mussel farms have been given a rough time too with floats turning up on Farewell spit. Float loss means more time hunting down loose floats, collection, replacement, and re-establishing lines. There is also all the rope sitting on the seabed.

Boy, do we have the solutions for you!

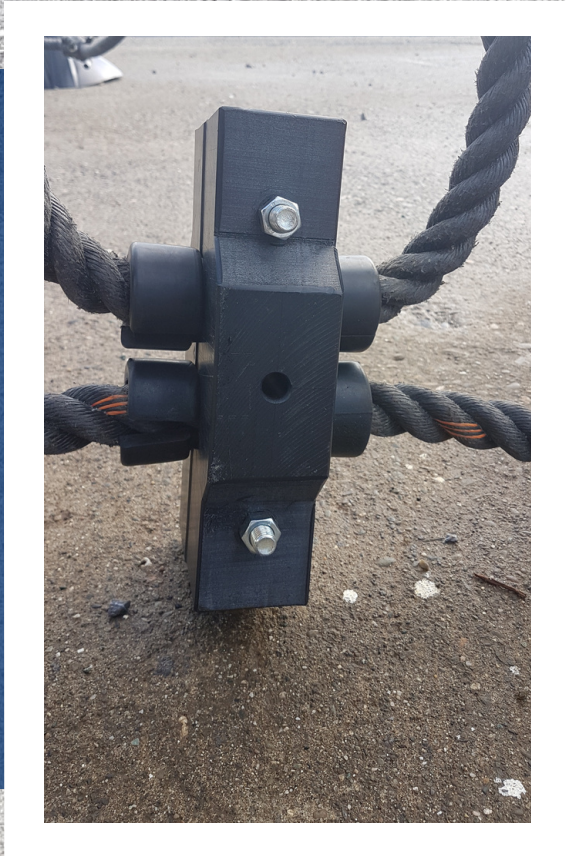
Not only do we have our CLAMP-ON float (Of which none were lost in the resent weather events) but we also have another new concept.

An Back Bone Line Attachment (BBLA) - read on to find out more.

Things to know

- Orange floats on the end of each line is the best way utilize this tech, it is where the most energy is on the line and where most float loss occurs.
- Replacement Guarantee: We believe in our product so if there is a rotary moulding failure, we will do a 100% replacement of the float.
- We have a great installation video available for you and your crew.

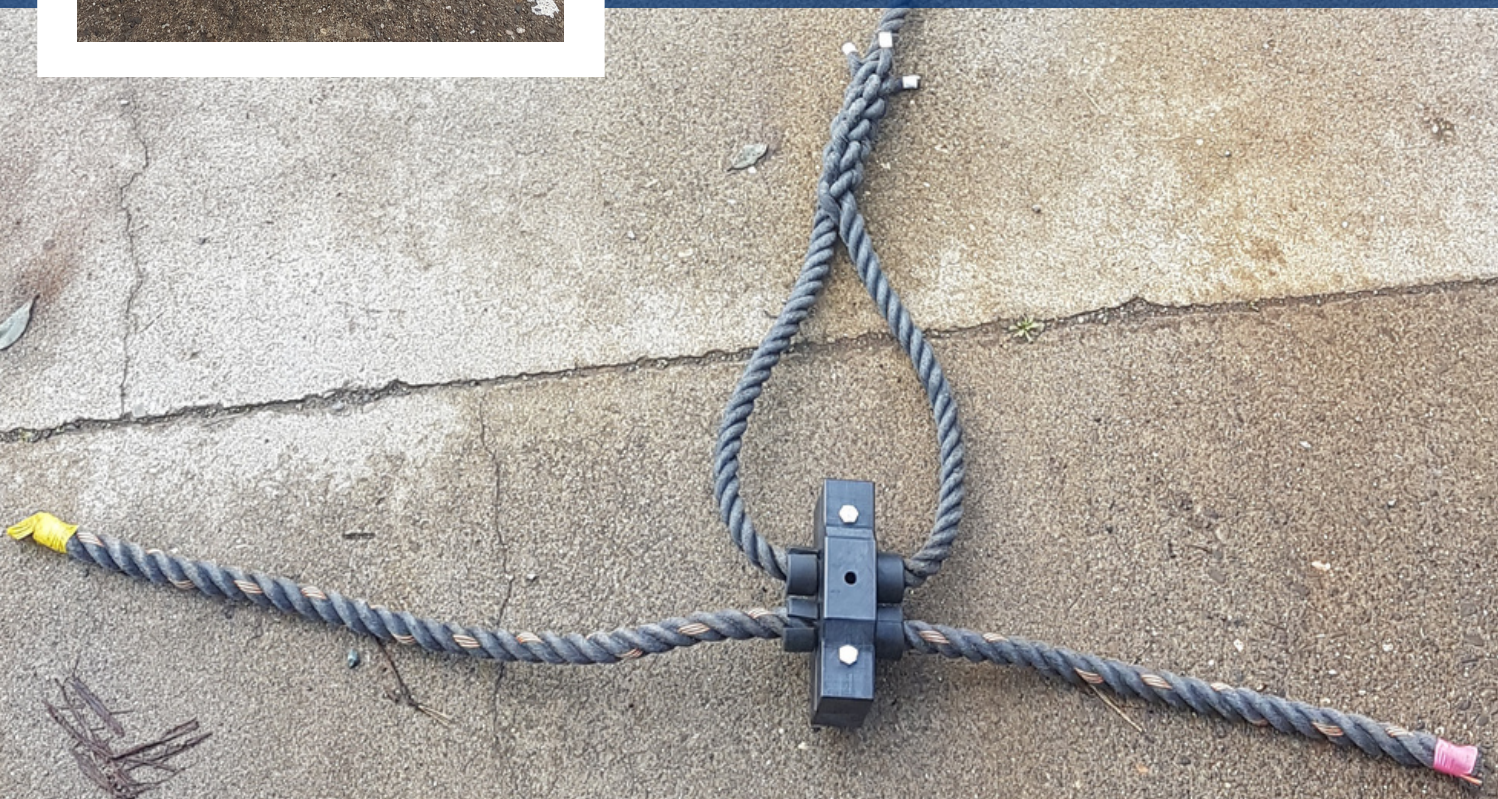




Latest Development

A Back Bone Line Attachment from the strop rope to the backbone.

This is anti-chafing and allows a "No lashing" rope solution to anchoring floats to the backbone. The attachment allows the backbone and the line to be attached separately, this eliminates chaffing that wears down the lines and creates a secure line that holds to the backbone.



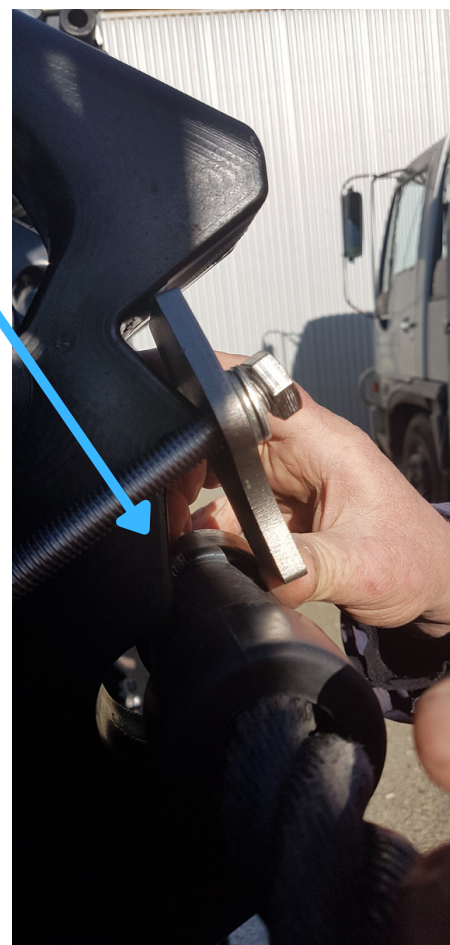
Correct Installation Clamp-On

Step by step guide to correct installation



STEP ONE:

Wrap the dog bone onto the rope. Rotate the dog bone on the backbone so that the split is facing the bottom of the groove of the float

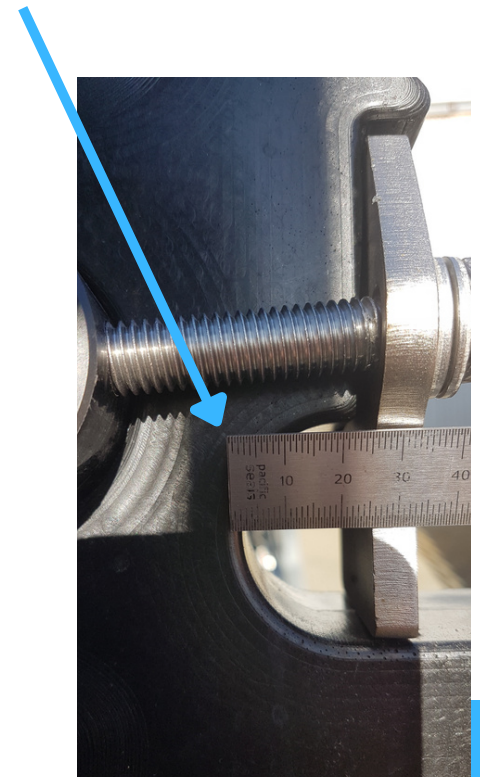
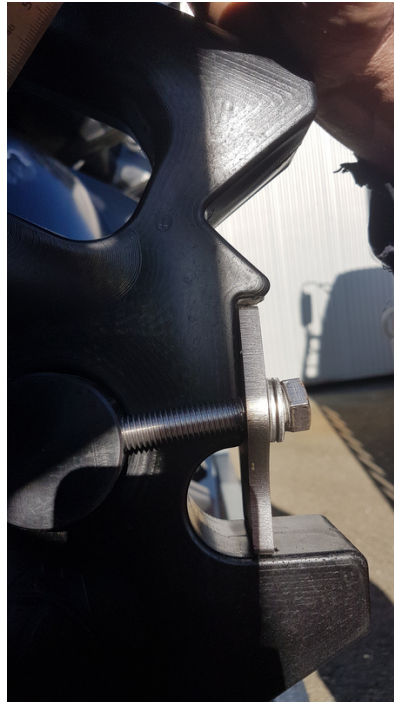


STEP TWO:

Tension the bolts sufficiently to bring the stainless steel plate in contact with the flat area on the float. Further tension could damage the thread.

NOTE:

You can tighten the plate until it goes flat onto the rotary moulded float. Below shows you how much crush you can put onto the sleeve. With this you can clamp onto smaller sleeves.



We **recommend** the best tool for this job is a **BOSCH GDS Impact driver**. Capacity to go to 200 NM's

We found that this is the best tool for tightening bolts until we retrofit air onto vessels



Call us today to order Direct
We welcome your feedback!

PETERSOLLY
P: 027 454 0010
Peter@ssfloats.co.nz

PAUL SMITH
027 667 7977
Paul@psgroup.nz